

# Correction of use of wide band Lambda Innovate

Release: V1.10 - 18/08/2025

<http://www.skynam.com>



Machine management

## Correction of use on wide band Lambda Innovate

All the data and information to be found in these documents are subject to modifications without notice.

No part of the documents may be reproduced or transferred, whatever the reason or the means used, whether mechanical or electronic, without prior authorisation from Skynam.

Skynam's general sales conditions are fully applicable.

WINDOWS is a Microsoft Corporation registered trademark

The WINDOWS logo is a™ Microsoft Corporation trade mark.

### Software licence

The Winjall software as well as its extensions are protected by copyright. When installing the software, you are accepting the licence registration conditions.

### Licence registration

Skynam grants the buyer the sole, exclusive and non transferable licence right to use the software on one personal computer. Copying the software or any other form of reproduction whatsoever, either partly or totally, as well as mixing or linking it to other products, is forbidden. The buyer is entitled to make one single copy as a matter of safety precaution.

Skynam reserves the right to modify or improve the software without notice or to replace it by a new development. Skynam does not have to inform the buyer about modifications or improvements or to supply them. No legal obligation for quality has been given. Skynam cannot be liable for any damage due to improper use of the software, unless this particular damage is due to some deliberate action or negligence on Skynam's part or their employees'.

Skynam won't accept any responsibility about subsequent damage, whether direct or indirect or due to the use of the software.

## IMPORTANT PRELIMINARY

This documentation has been specially updated for the firmware versions of the Challenger ECUs:

- Challenger5 version 2.90 and newer
- Challenger6 version 2.70 and newer
- Challenger7 version 1.50 and newer
- Challenger8 version 1.50 and newer

The document 'Use of Lambda sensor' provided by the installation of these ECUs gave incorrect information on the programming of Innovate modules.

The previous version V1.00 of this present document still gave errors.

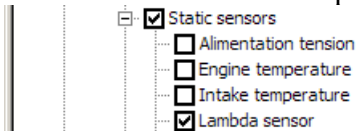
The present document corrects a new time these errors. These corrections are marked in red.

## USE OF INNOVATE LAMBDA MODULES

From the new firmware versions of the Challenger given above, it is also possible to use the Innovate modules, but these must be specifically programmed to be adapted to the characteristics of the Sybele ECUs.

### I) LINEARISATION MAP OF THE LAMBDA SENSOR:

Go to the Lambda sensor page of the Winjall software ECU tuning:



And set the conversion map in this way:

#### ECU DISPLAY IN RICHNESS

Here is the **(new correction)** linearization map of the Lambda sensor to set in the ECU:

Lambda conversion	Innovate-MTX		
LINE SCALE	Not defined		Standard interpolation
COLUMN SCALE	Lambda sensor input level		0 Standard interpolation
Richness	200	2500	4800
0	1333	1000	667

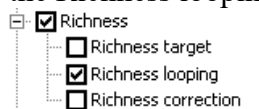
#### ECU DISPLAY IN LAMBDA

Here is the **(new correction)** linearization map of the Lambda sensor to set in the ECU:

Lambda conversion	Innovate-MTX		
LINE SCALE	Not defined		Standard interpolation
COLUMN SCALE	Lambda sensor input level		0 Standard interpolation
Lambda	200	2500	4800
0	0.750	1.000	1.499

### II) MAP OF HEATING TIME OF THE LAMBDA SENSOR:

And go the Richness looping page of the Winjall software:



And set the map of Max waiting time before start in this way:

Max waiting time before Lambda start correction	Maximum waiting time at engine start in milliseconds		
LINE SCALE	Not defined		Standard int
COLUMN SCALE	Engine temperature (°C)		-273 Standard int
	-40	+40	+60 +80
1000	65535	45000	45000 40000

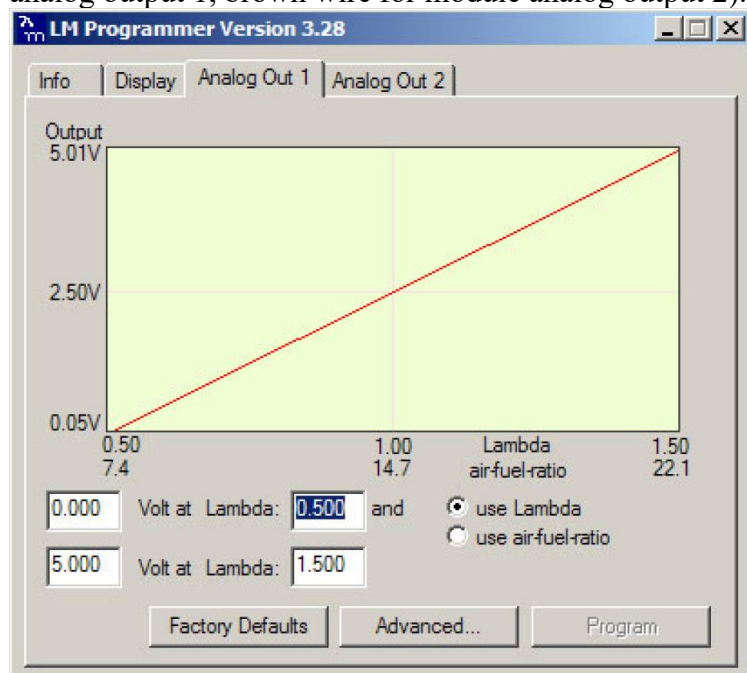
Indeed, the Innovate modules have very long sensor warm-up times and if we do not correctly position the waiting time in this map, the ECU will start using the sensor while it is not yet working, and the richness correction will be bad.

### III) PROGRAMMATION OF INNOVATE MODULE WITH THE INNOVATE SOFTWARE:

See the User's manual of your Innovate

#### ANALOG OUTPUT PROGRAMMING

Select the tab corresponding with the output that you have wired to the ECU (yellow wire for module analog output 1, brown wire for module analog output 2).



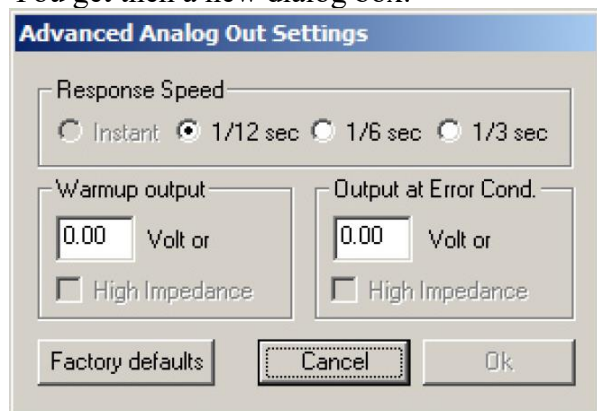
(image of Innovate software)

- 1) Check 'Use Lambda'.
- 2) Then, whether you have programmed Winjall to work in richness or in Lambda,
  - On the first line, fill **0.200** Volts at Lambda **0.750** (new correction)
  - On the second line, fill **4.800** Volts at Lambda **1.500** (new correction)
- 3) Click on the button [Program] to record these tunings in the module Innovate

#### ADVANCED PROGRAMMING OF ANALOG OUTPUT

In the setup page of the output, click on the button [Advanced]

You get then a new dialog box:



(image of Innovate software)

- 1) Check "Response speed" 1/12 sec or faster if it exists
- 2) In the value "Warmup output" (value while heating), set **2.50** Volts
- 3) In the value "Output at Error Cond" (value on error), set **0.00** Volts
- 4) Click on the button [OK] to record these tunings in the module Innovate

These values will allow the ECU to accurately find the Lambda errors and to help waiting the Lambda sensor heating before use it.